

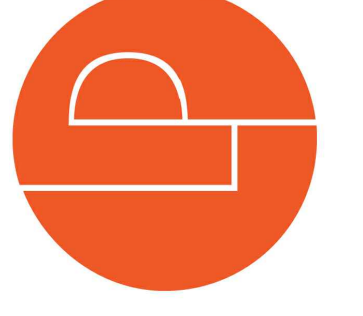
REVISED: 11/2/19  
 BID/PERMIT

PRINTING:

CITY OF PIQA  
 PUBLIC WORKS FACILITY  
 854 SOUTH MAIN STREET  
 PIQA, OHIO 45956

PROJECT NO.: 17-05-0217-2  
 CHECKED BY: DIS  
 DRAWN BY: TAH  
 DATE: PRELIMINARY

LEVIN PORTER ARCHITECTS  
 3011 DELAWARE DRIVE  
 MARIETTA, OHIO 43432  
 TEL: 637.224.1331  
 FAX: 637.224.3051  
 www.levin-porter.com



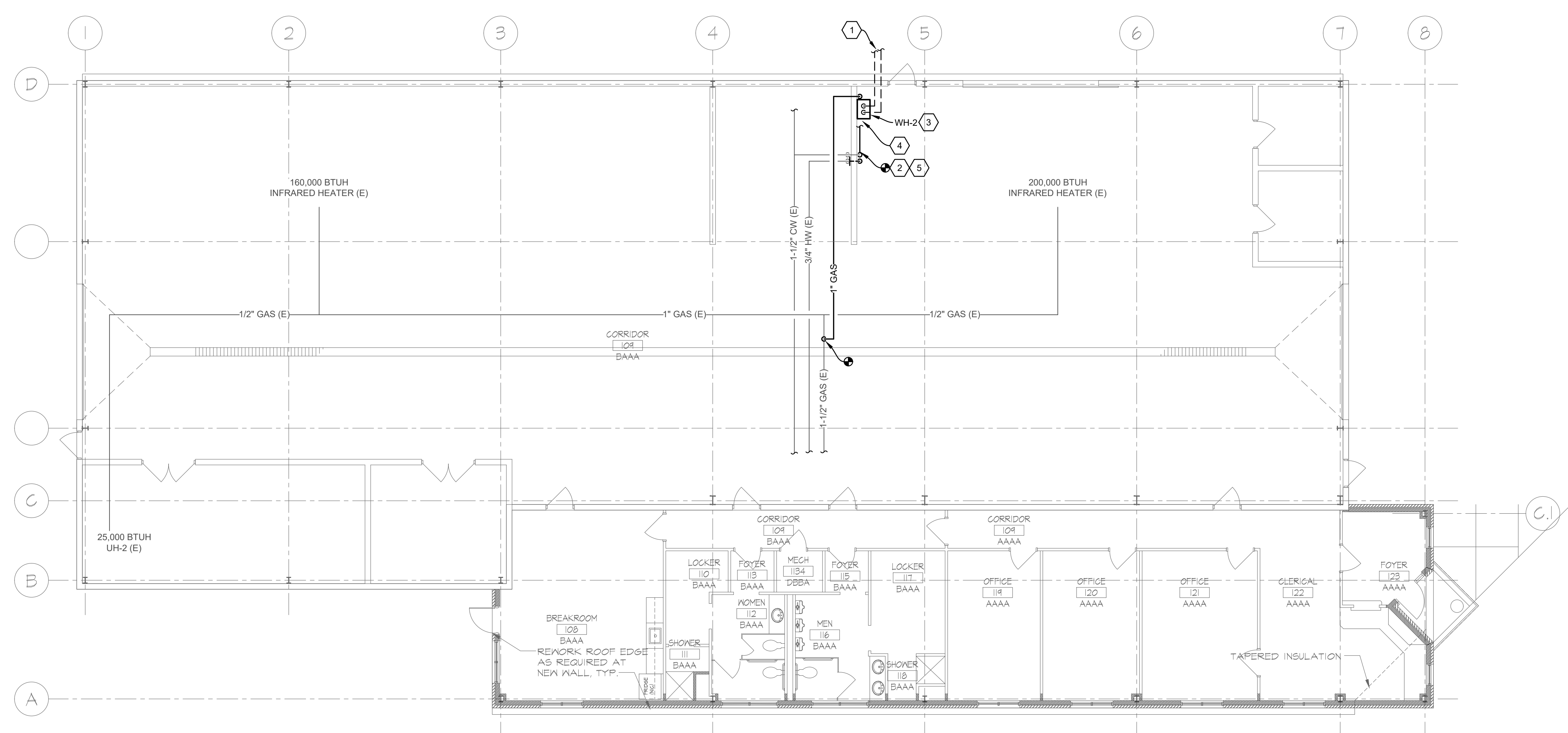
DRAWING NUMBER

101

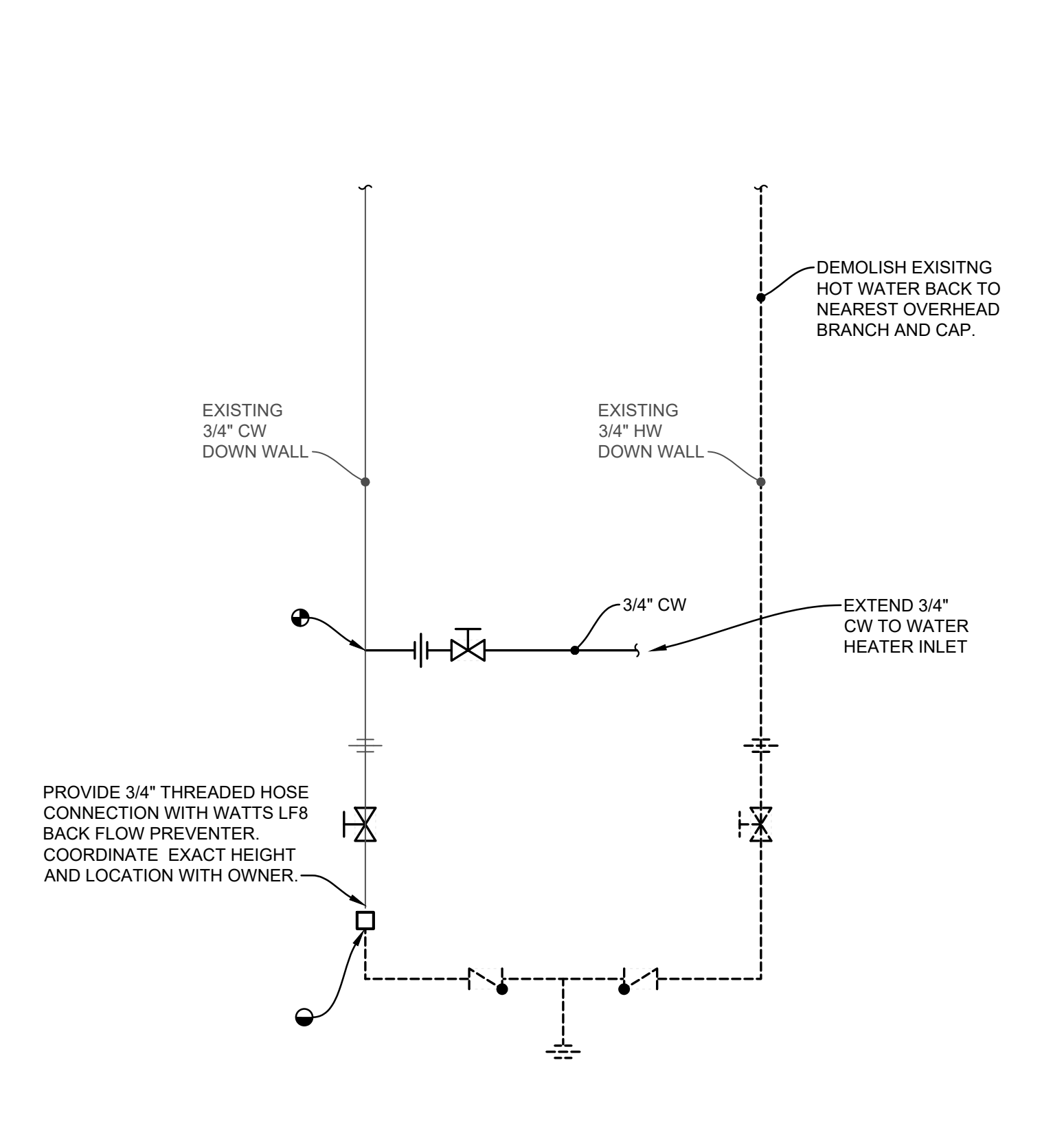
- CODED NOTES:**
- EXTEND 3" INTAKE AND EXHAUST VENTING TO EXTERIOR OF BUILDING. PIPING SHALL BE SOLID CORE PVC OR ALTERNATIVE MATERIAL APPROVED BY TANKLESS WATER HEATER MANUFACTURER. INSTALL VENT TERMINATION KIT PER MANUFACTURER'S RECOMMENDATIONS. AND LOCAL CODE REQUIREMENTS
  - DEMOLISH EXISTING HOT WATER BACK TO NEAREST OVERHEAD BRANCH CONNECTION AND CAP. EXTEND 3/4" COLD WATER FROM ADJACENT LOCATION TO NEW TANKLESS WATER HEATER. PROVIDE ADDITIONAL 3/4" COLD WATER HOSE CONNECTION. REFER TO DETAIL THIS SHEET.
  - INSTALL TANKLESS WATER HEATER PER MANUFACTURER'S RECOMMENDATIONS. COORDINATE EXACT LOCATION IN FIELD WITH THE OWNER. REFER TO DETAIL THIS SHEET.
  - CONTRACTOR SHALL REMOVE EXISTING STORAGE SHELF AND AND RELATED SIGNS AND TURN OVER TO THE OWNER.
  - NEW DOMESTIC WATER PIPING TO BE INSULATED TO MATCH EXISTING WATER PIPING.

**WH-2**  
 RINNAI C1199N 199,000 BTU/Hr NATURAL GAS, CONDENSING, COMMERCIAL INDOOR TANKLESS WATER HEATER. FURNISH WITH ISOLATION VALVE KIT, VENT TERMINATION KIT, FLEXIBLE CONNECTORS, RELIEF VALVE, AND ALL OTHER APPURTENANCES REQUIRED FOR INSTALLATION. EQUALS FROM A.O. SMITH OF RHEEM ACCEPTABLE.

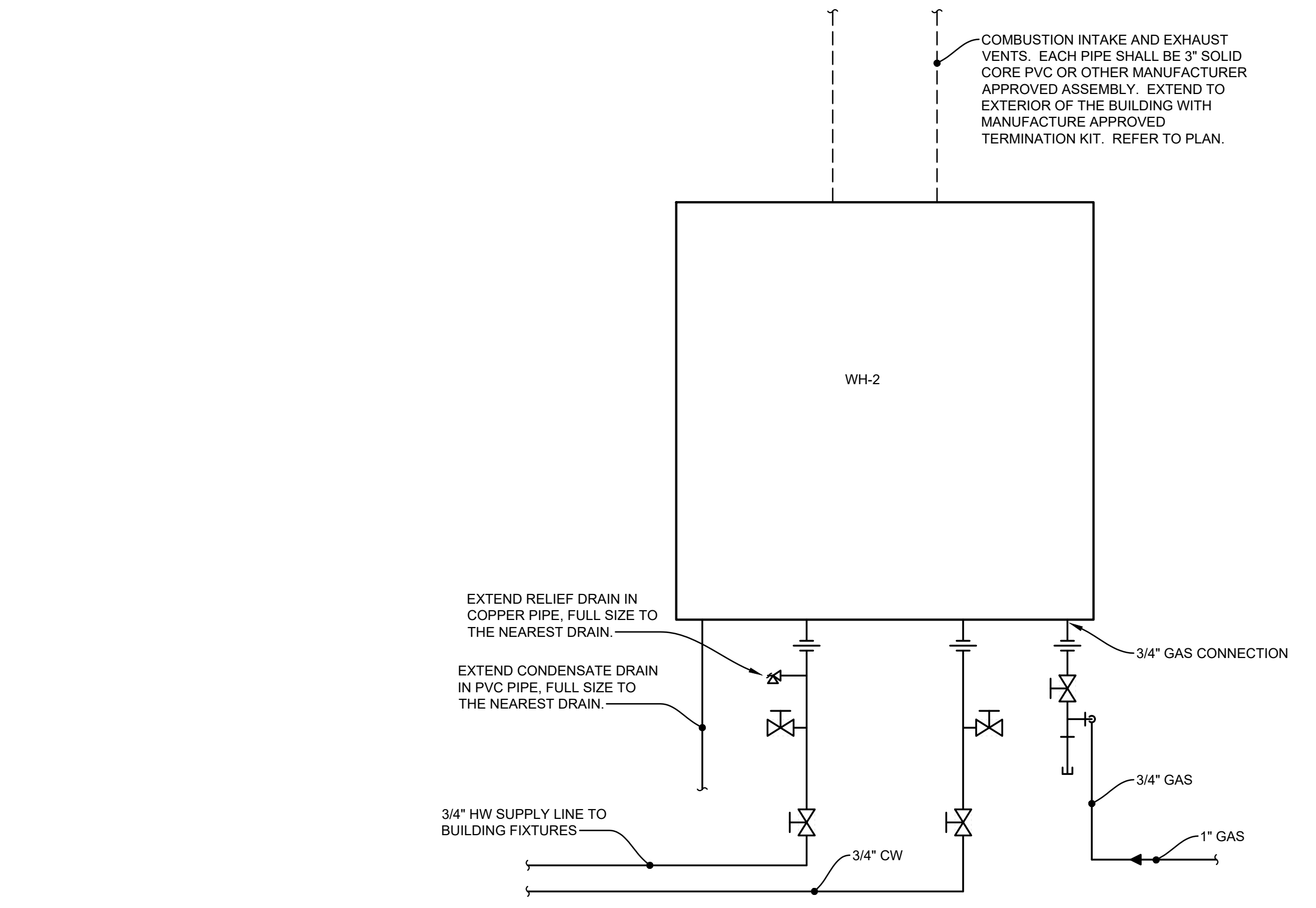
**PIPE MATERIAL SPECIFICATIONS:**  
 ALL DOMESTIC WATER PIPING SHALL BE TYPE "L" COPPER WITH WROUGHT COPPER FITTINGS, JOINED WITH TIN ANTIMONY (95-5) SOLDER. PROVIDE DIELECTRIC FITTINGS WHEN JOINING OR ABUTTING DISSIMILAR METALS.  
 ALL NATURAL GAS PIPING SHALL BE SCHEDULE 40 BLACK IRON WITH THREADED BLACK MALLEABLE IRON FITTINGS.



**1 FIRST FLOOR PLUMBING PLAN**  
 1/8"=1'-0"



**A COLD WATER CONNECTION DETAIL**  
 NTS



**B WATER HEATER CONNECTION DETAIL**  
 NTS

| PLUMBING SYMBOLS<br>(NOT ALL SYMBOLS MAY BE USED) |              |                         |                                |
|---|--------------|-------------------------|--------------------------------|
| NEW SYMBOL  | DEMO. SYMBOL | EXIST. TO REMAIN SYMBOL | DESCRIPTION                    |
| —DCW—   | ---          | —DCW—                   | DOMESTIC COLD WATER            |
| —DHW—   | ---          | —DHW—                   | DOMESTIC HOT WATER             |
| —DHW—   | ---          | —DHW—                   | DOMESTIC HOT WATER RETURN      |
| —FL—  | ---          | —FL—                    | FIRE LINE                      |
| —STM—   | ---          | —STM—                   | STORM LINE                     |
| —SAN—   | ---          | —SAN—                   | SANITARY LINE                  |
| —GR—  | ---          | —GR—                    | GREASE SANITARY LINE           |
| —AW—  | ---          | —AW—                    | ACID WASTE LINE                |
| —AV—  | ---          | —AV—                    | ACID VENT LINE                 |
| —V—   | ---          | —V—                     | VENT LINE                      |
| —G—   | ---          | —G—                     | GAS LINE                       |
| —W—   | ---          | —W—                     | WATER SERVICE LINE             |
| —140°—  | ---          | —140°—                  | 140° F. WATER                  |
| —TW—  | ---          | —TW—                    | TEMPERED WATER                 |
| —R—   | ---          | —R—                     | REDUCER                        |
| —F—   | ---          | —F—                     | FLOOR OR AREA DRAIN            |
| —C—   | ---          | —C—                     | CURB BOX AND VALVE             |
| —C—   | ---          | —C—                     | CAPPED LINE                    |
| —U—   | ---          | —U—                     | PIPE UNION                     |
| —P—   | ---          | —P—                     | P-TRAP (PLAN VIEW)             |
| —T—   | ---          | —T—                     | PIPE TEE DROP                  |
| —T—   | ---          | —T—                     | PIPE TEE RISE                  |
| —D—   | ---          | —D—                     | PIPE DROP                      |
| —R—   | ---          | —R—                     | PIPE RISE                      |
| —WCO—   | ---          | —WCO—                   | WALL CLEAN-OUT                 |
| —EPCO—  | ---          | —EPCO—                  | END PIPE CLEAN-OUT             |
| —FCO—   | ---          | —FCO—                   | FLOOR CLEAN-OUT                |
| —T—   | ---          | —T—                     | TRAP PRIMER                    |
| —S—   | ---          | —S—                     | SHUT-OFF VALVE                 |
| —F—   | ---          | —F—                     | PIPE FLEX CONNECTION           |
| —B—   | ---          | —B—                     | BALL VALVE                     |
| —Y—   | ---          | —Y—                     | Y-TYPE STRAINER                |
| —G—   | ---          | —G—                     | GAS COCK (PLUG VALVE)          |
| —C—   | ---          | —C—                     | CHECK VALVE                    |
| —B—   | ---          | —B—                     | BACKFLOW PREVENTER             |
| —B—   | ---          | —B—                     | BALANCE VALVE                  |
| —C—   | ---          | —C—                     | COMB. BALANCE & SHUT-OFF VALVE |
| —D—   | ---          | —D—                     | DRAIN VALVE                    |
| —P—   | ---          | —P—                     | PRESSURE RELIEF VALVE          |
| —P—   | ---          | —P—                     | PRESSURE REDUCING VALVE        |
| —T—   | ---          | —T—                     | VALVE WITH TAMPER SWITCH       |
| —S—   | ---          | —S—                     | SOLENOID VALVE                 |
| —A—   | ---          | —A—                     | SHOCK ABSORBER                 |
| —H—   | ---          | —H—                     | HOSE BIBB                      |
| —A—   | ---          | —A—                     | PIPE ANCHOR                    |
| —G—   | ---          | —G—                     | PIPE GUIDE OR SLEEVE           |
| —F—   | ---          | —F—                     | FLOW DETECTOR SWITCH           |
| —P—   | ---          | —P—                     | PRESSURE GAUGE WITH GAGE COCK  |
| —T—   | ---          | —T—                     | TEMPERATURE GAUGE              |
| —F—   | ---          | —F—                     | THRU FLOOR AS SHOWN            |
| —L—   | ---          | —L—                     | STACK LETTER                   |
| —R—   | ---          | —R—                     | RISER NUMBER                   |
| —C—   | ---          | —C—                     | CONNECT TO EXISTING            |
| —L—   | ---          | —L—                     | LIMITS OF DEMOLITION           |